

EXHIBITIONS**Paris Dispatch / May 2022**

Paris: Solo shows from Robert Wilson, Alvar Aalto and Martin Kippenberger, plus a magical decorative arts scenography fairyland from Galerie Chastel-Maréchal

Ketabi Bourdet: 'Robert Wilson: A chair and its shadow'

Until 18th June 2022

Gokelaere & Robinson: 'Alvar Aalto and the Maison Louis Carré'

Until 2nd July 2022

Skarstedt Gallery: 'Martin Kippenberger: De Lumière et Sentiments'

Until 2nd July 2022

Galerie Chastel-Maréchal: 'Féeries'

Until 4th June 2022

By Anna Sansom / 31st May 2022



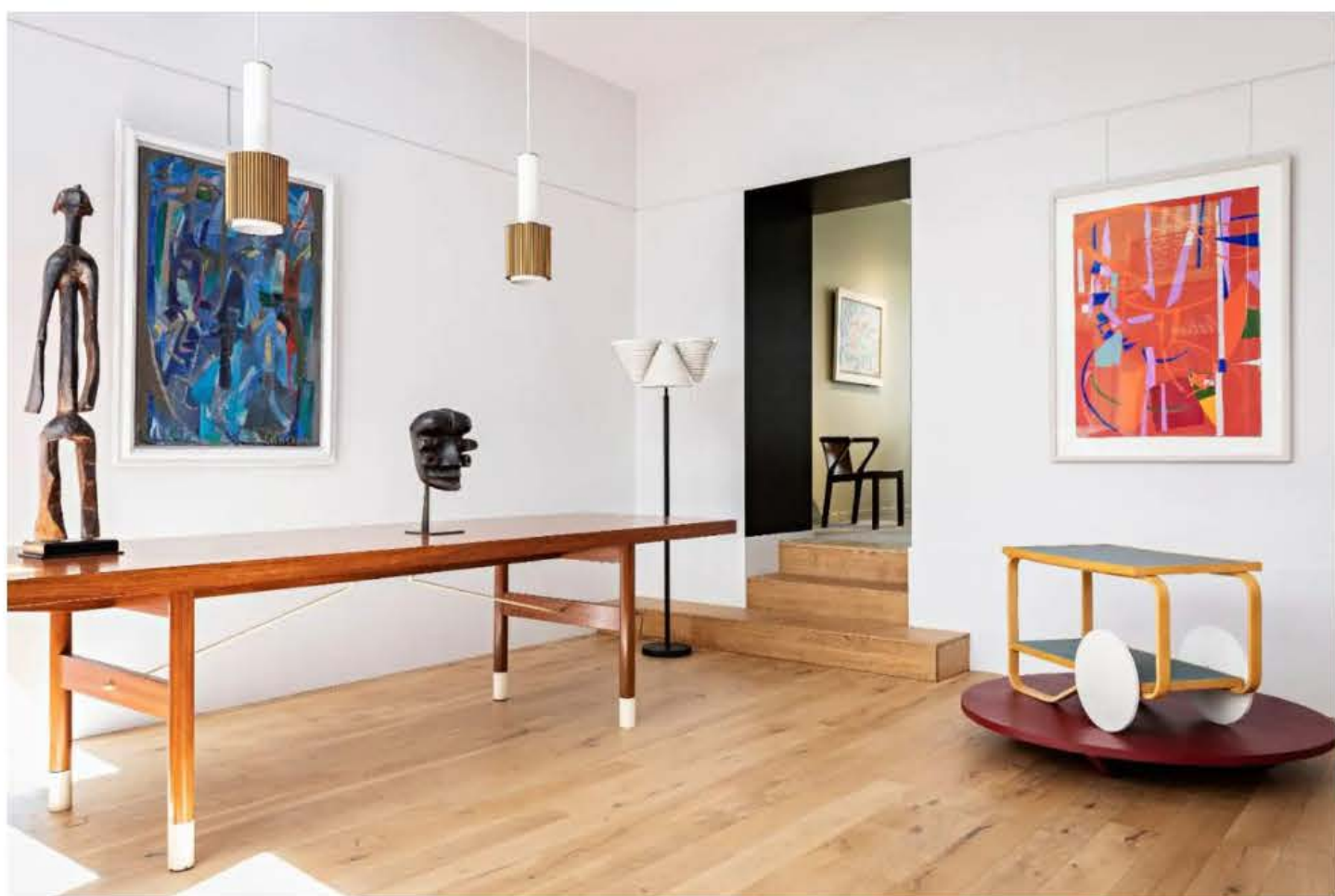
Alvar Aalto, (left to right) 'Room Divider', 1930; 'Angel Wing Lamp', 1954; 'Paimio' armchair, 1932

COURTESY: Alvar Aalto & Gokelaere & Robinson /
PHOTOGRAPH: Yann Deret

AS SPRING BRIGHTENS up Paris, galleries are curating imaginative exhibitions that arouse curiosity and stimulate the minds of viewers to recontextualise artworks with renewed perspectives. The four shows that *The Design Edit* focuses on this month all feature twentieth-century works that were radical at their time of creation and remain inspirational today. We take a look at chairs by American theatre director Robert Wilson, furniture and lighting by Finland's Alvar Aalto, lamp sculptures by German artist Martin Kippenberger and an enchanted wonderland group show of

Gokelaere & Robinson: 'Alvar Aalto and the Maison Louis Carré'

Finnish architect Alvar Aalto designed only one project in France: Maison Louis Carré – a modernist villa in Bazoches-sur-Guyonne, a village southwest of Paris – for the art dealer and collector Louis Carré. Aalto also designed furniture and lighting for the house, which was filled with paintings by artists such as Picasso, Fernand Léger and André Lansky. This exhibition at Gokelaere & Robinson, the third since the gallery opened last October, presents Aalto's work within a context similar to that of Maison Louis Carré.



Exhibition view, 'Alvar Aalto and the Maison Louis Carré' at Gokelaere & Robinson

COURTESY Alvar Aalto & Gokelaere & Robinson

Greeting visitors is Aalto's undulating room divider, which recalls the wave-shaped pine ceiling at the entrance of Maison Louis Carré. There's also Aalto's iconic 'Paimio Chair' (1931-1932), whose bent and looped curves pushed the boundaries of plywood manufacturing, the white 'Angel Wing' light (1954) and the 'Turnip' pendant lamp (1950).



Alvar Aalto, 'Turnip' pendant lamp, circa 1950
COURTESY: Alvar Aalto & Gokelaere & Robinson

The gallery has paired Aalto's works with several of Lansky's paintings. For instance, a delightful green 'Tea Trolley' (1937) is displayed next to a red-toned collage by Lansky from 1959. Then in the adjoining room, Aalto's 'Aurinko' (Sun-series) garden furniture, the table reminiscent of a daisy, is presented with Lansky's pastel oil painting from 1961. The furniture set was created in 1938-1939 for Villa Mairea, which Aalto designed for Harry and Maire Gullichsen in Finland.



Alvar Aalto, 'Garden chairs and table', 1938-39
COURTESY: Alvar Aalto & Gokelaere & Robinson /
PHOTOGRAPH: Yann Deret

Although several of Aalto's pieces on view were not conceived for Maison Louis Carré, the show nonetheless contextualises Aalto's graceful oeuvre in a faintly domestic setting.